



News Brief : Quarter 3 2024
Commission 7

What is in this edition?

- Report from **Annual Meeting 2024** in Kuching, Sarawak, Malaysia
- Updates from **WG 7.1 FELA**; **WG 7.2 FFPLA**; **WG 7.3 LADM + 3D**; **WG 7.4 AI&RS**; **WG 7.5 Women's Access to Land**; **WG 7.7 Digital Transformation**; **WG 7.7 LA Education**; and **WG 7.8 Comparative Cadastres**
- Promo for **2024 FIG Regional Conference** in Kathmandu, Nepal; **2025 Working Week** in Brisbane Australia; **C7 AM 2025** in Brazil





Annual Meeting 2024

Where did we go? What did we do?

Many thanks!

The **FIG C7 Annual Meeting** was held in Kuching, Sarawak, **Malaysia**, at the Riverside Majestic Hotel from September 24-26, 2024. This always significant event was hosted by the **University Technology Malaysia** and the **Sarawak Survey Department**. The meeting was convened by **Prof. Alisa Abdul Rahman**, and opened by the **Premier of Sarawak**. We had beautiful riverside setting and enjoyed the rich cultural backdrop of Kuching, known for its vibrant history and diverse heritage. The gathering fostered collaboration and the exchange of ideas among **250** land and surveying professionals in the field.

Gold sponsor:



Silver sponsor:



A Truly Global Event

The C7 AM was part of **Geoinformation Week Malaysia 2024** bringing together several big events in one location. This created a dynamic platform for knowledge sharing and collaboration. The week included the **Land Administration Domain Model (LADM) & 3D Land Administration** International Workshops, the **FIG C5 Annual Meeting**, and discussions on the **UN Habitat Social Tenure Domain Model (STDM)**. Additionally, a **pre-conference tutorial program** took place on September 23rd that included a full day '**Land Administration for Climate Action**' event hosted by Kadaster Netherlands and ITC University of Twente. We had approx. **50** attendees for the C7/C5 and 3D/LADM events, and a vibrant atmosphere for exchanging ideas and best practices in geoinformation and land administration.





Cutting Edge Knowledge Creation

...themes and topics covered...

- Fit for Purpose Land Administration (**FFPLA**)
- **Women's** Access to Land (and Administration)
- The UN's Framework for Effective Land Administration (**FELA**)
- Artificial Intelligence and **Remote Sensing** Advances (**AI&RS4LA**)
- 3D Land Administration (**3DLA**) and Digital Twins (in the LADM stream)
- The Land Administration Domain Model (**LADM**)
- **Digital Transformation** in Land Administration (including integration with Land Use Planning)
- **Cybersecurity**, National Security; Sovereignty; Cadastral Data **Quality** and **Open Data**
- **Education** in Land Administration
- **Comparative** Cadastres



A Full Program!

The FIG C7 event featured **20 abstracts** and presentations, organized into **6 technical sessions**. It was supported by **two excellent sponsors**, enhancing the overall experience for participants. A well-rounded **social program** complemented the technical discussions, providing opportunities for networking and collaboration.

For more details, visit the event page at https://fig.net/organisation/comm/7/activities/events/2024_annual_meeting.asp



Gold sponsor:



Silver sponsor:





GeowWeek 2024

Kuching, Sarawak
23 - 26 September 2024

PROGRAM BOOK

- FIG Commission 5 Annual M
- FIG Commission 7 A
- FIG Land Ad
- Adm

Key Takeaways

- FIG can support **land agencies** in advocating for the role of land administration systems in delivering **national security** and **sovereignty** through **transaction controls** and **transparency**
- Land information systems are increasingly a **security risk** in themselves, due to digitalization
- Asia continues to rapidly rise **economically** and **technologically** supported by land administration, though, many countries lag with endemic **capacity** and **institutional** problems. **Climate change** response can unite
- Sarawak provides an excellent example where land **tenure**, **value**, **planning** and **development** functions are **integrated** into a single agency
- **Sarawak Survey Department**, backed by central Malaysian government, is playing a leading role in surveying and registering **communal lands**, **free** for those communities



Geospatial Innovation for Sustainable Rural and Urban
FIG Commission 7 & 5 Annual Meeting
24-26 September 2024 in Berlin

C7 Annual meeting part 1
Exploring the concepts of national security
in land administration
Kirsikka Riekkinen (Finland), Walter Timo de
Vries (Germany)

Gold sponsor:



Silver sponsor:



C7 Working Group Updates

Where are we at?

Working Groups State-of-Play Snapshot October 2024

View our 2023-26
Workplan for full details

https://www.fig.net/organisation/comm//7/workplan_23-26.asp

FIG Commission 7 2023-26 Workplan Dashboard						
		2023	2024	2025	2026	Current Status
WG 7.1 FELA						
Activities	Case and Tool Capture	25%	50%			75%
	Advocacy and Awareness	10%	30%			40%
Outputs	FELA Publication	5%	5%			10%
WG 7.1 FFPLA						
Activities	FFPLA Implementaiton Survey	10%	30%			40%
	FFPLA Case Stories	25%	50%			75%
	Land Tenure Day'	0%	0%			0%
Outputs	FFPLA Publication	0%	10%			10%
WG 7.3 3D&LADM						
Activities	LADM Revision Support	25%	55%			80%
Outputs	Broadinq 3D Land Administration	10%	55%			65%
	LADM Revision Document	0%	55%			55%
	2nd SI on LADM Revision	0%	55%			55%
WG 7.4 AI&RS						
Activities	Technique and Tool Identification	25%	25%			50%
	Country Level Case Capture	25%	25%			50%
Outputs	RS&LA Publication (SI)	0%	0%			0%
WG 7.5 Women						
Activities	FIG Pub 24 Review	15%	25%			40%
	Stand for Her Land Support	20%	20%			40%
	Case Story Capture	10%	25%			35%
Outputs	Publication 24 Update	5%	10%			15%
	Field Catalogue	0%	10%			10%
WG 7.6 LA+LUP						
Activities	Capturing country cases	20%	30%			50%
	Capturing tools and techniques	20%	30%			50%
Outputs	Publication DT&LM	0%	5%			5%
	SI on DT&LM	0%	5%			5%
WG 7.7 LA Education						
Activities	TERLA development	20%	50%			70%
	Curriculum Review	20%	50%			70%
Outputs	TERLA Publication	0%	50%			50%
	Journal Article	0%	80%			80%
WG 7.8 Comparative Cadastres						
Activities	Needs Assessment	5%	20%			25%
	Strategy Development	5%	20%			25%
	Pilot Implementation	5%	0%			5%
Outputs	State-of-Play Reports x4	25%	10%			35%
	Pilot / Demonstration / Implementation	0%	0%			0%

Working Group 7.1 FELA

We're collaborating with the UNGGIM Expert Group on Land Administration and Management (EGLAM) to promote the **Framework for Effective Land Administration (FELA)**.

In **Asia** a dedicated session was held on FELA at the C7 Annual Meeting in Malaysia. This was a good chance for awareness raising. Additionally, Singapore Land Authority (SLA) showcased its use of FELA in strategic and operational work.

In **Europe**, a second online survey on the FELA's 3 technology pathways—Data, Innovations, and Standards—was conducted in Spring 2024, garnering 33 responses from 23 countries. Earlier, the survey on the 3 governance pathways achieved similar results. A third and final survey on the 'People' pathways is planned for Autumn 2024.

In **Latin America**, FELA FIG presentations are set for the Comité Permanente del Catastro en Iberoamérica and the COBRAC event in Brazil in November 2024. The 2024 collaboration with GLTN will focus on lessons from country-level FELA applications.

For **Africa**, a session at FIG 2024 highlighted examples from the DRC and Nigeria. The group is also looking forward to promoting FELA in MENA, potentially at the upcoming 3rd Arab Land conference in Morocco in February 2025.

A **new FELA FIG publication** is in progress, with a draft due by 2025.

For details, contact Amalia Velasco at amalia.velasco@catastro.hacienda.gob.es



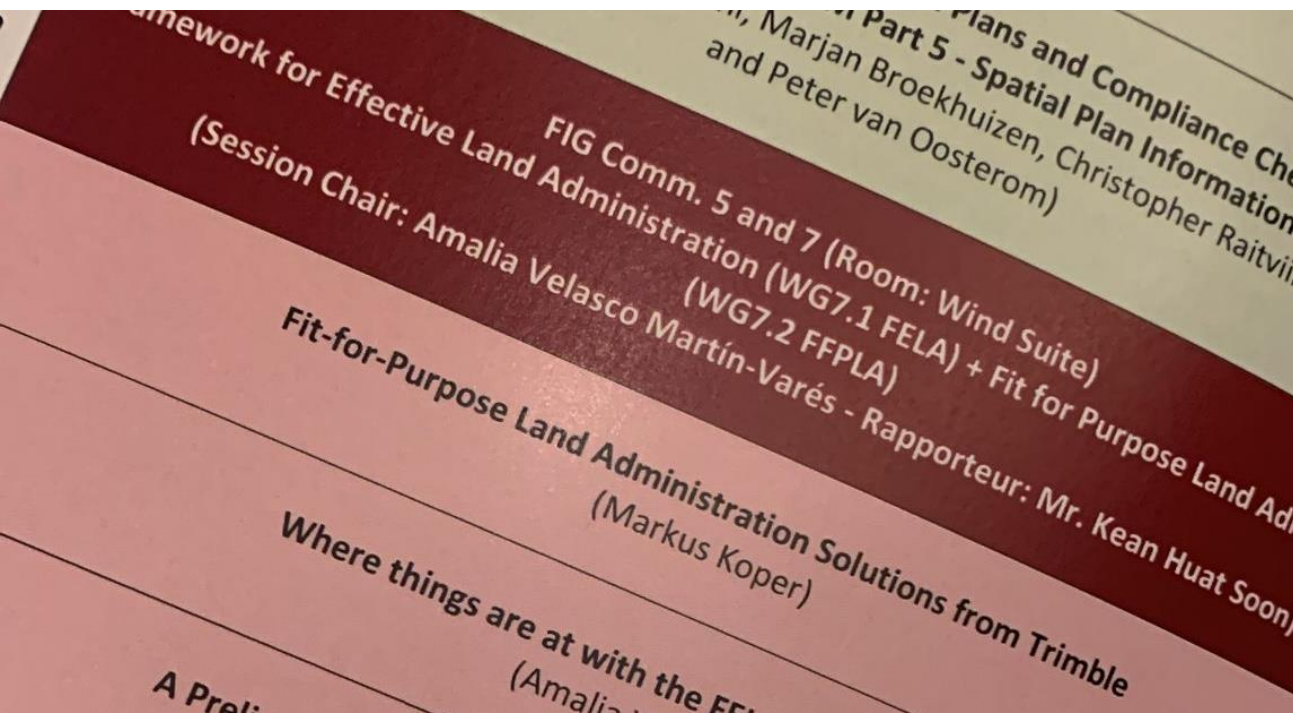


Working Group 7.2 FFPLA

The main focus of WG7.2 is preparing the new FFPLA publication. This is a follow-up to the 2014 FIG FFPLA publication and the 2016 GLTN/FIG FFPLA Guidelines. This publication will draw from interviews conducted in 2020/2021, a side event held in May 2024 at WW 2024, and responses to the "Fit-for-Purpose Land Administration: Status, Stories, and Scaling" survey.

Stay tuned for a survey link that will be shared. Drafting team meetings will be scheduled over the coming weeks.

Contact: Israel Taiwo, taiwo_io@fedpolyado.edu.ng





Working Group 7.3 3D/LADM

Thank you to the participants and reviewers for the **12th International FIG Workshop on the Land Administration Domain Model & 3D Land Administration**, held in Kuching, Malaysia, from September 24-26, 2024. The thorough reviews of the extended abstracts greatly enhanced the quality of the papers, with authors incorporating nearly all constructive feedback into their final versions. The best paper award was presented to **Maria Luisa Tarozzo Kawasaki** for her work on subsurface information models and climate adaptation design.

Looking ahead, we will select papers for a **special issue** of the International journal **Survey Review**, inviting authors to submit revised versions by March 2025, including at least 40% new material. Full papers and presentations from the workshop are available online. Next year's workshop is tentatively scheduled for **November 3-5, 2025, in Florianópolis, Brazil**. Thank you again for your support!

Contact: Peter van Oosterom,
P.J.M.vanOosterom@tudelft.nl





Working Group 7.4 AI&RS



A notable achievement to report is Jeroen's paper on "**CadastreVision: A Benchmark Dataset for Cadastral Boundary Delineation from Multi-Resolution Earth Observation Images.**" This initiative aims to enhance cadastral boundary delineation and explore knowledge transfer from data-rich regions, such as the Netherlands, to data-scarce areas. **CadastreVision is the first benchmark dataset available for cadastral mapping**, featuring cadastral reference data and Earth observation data with resolutions ranging from 0.08 m to 10 m. The dataset shows that 72% of all cadastral boundaries in the Netherlands are visible.

For more details, the paper can be accessed [here](#), the dataset is available [here](#), and the GitHub repository can be found [here](#).

Contact: Mila Koeva, m.n.koeva@utwente.nl

Working Group 7.5 Women's Access to Land (and Administration)

The Women and Land Rights (WLRs) working group was busy in Q3 and has several key activities planned for Q4. They are finalizing the Table of Contents for the revised **FIG Publication 24** and creating a structured list of field guides. Additionally, they are completing the concept note for the **Clinic Day Initiative**, collaborating with **S4HL Tanzania**, the **World Bank**, and national associations for a pilot in Tanzania. The group is revising the **SDG 2024** report with a focus on SDG 5 and gathering more responses for the WLRs questionnaire, particularly from Latin America, MENA, Southeast Asia, and the Pacific regions.

In **Latin America**, the group presented research on WLRs barriers at the 10th International Geomatic Week in Colombia (October 7-11). In **Africa**, they will showcase the Clinic Day Initiative at the 1st Women's Land Professional Associations meeting in Tanzania (November 24-30). Ongoing discussions are planned for a virtual session in **Asia** (Nepal Regional Conference), while a roundtable at COP16 will explore climate change impacts on women and land redistribution. Participation at **WUF12** is also confirmed by Kholoud Saas. Exciting developments are underway!

Contact: Marisa Balas marisa.balas@gmail.com; Kate Fairlie KFairlie@landequity.com.au





Working Group 7.6 Digital Transformation of Land Management

At the beginning of this year, we launched a **survey** to gather perceptions on integrated land administration and management. We've received over **30 responses** from more than **20 countries**, primarily from academia and the government sector. The survey remains open, and we encourage your participation. Your input will help create a more nuanced and regionally differentiated analysis. If you haven't participated yet, please take 20 minutes to sort through 25 statements regarding your level of agreement. **You can find the survey link [link to the survey](#) .**

Initial findings were presented at the annual meeting in **Kuching**, where we also enjoyed insightful presentations on digital technologies from **Nepal** and **Australia**. This event fostered valuable networking opportunities. Looking ahead to **Brisbane 2025**, we plan to host a session focusing on best practices for integrating land administration with land use planning, emphasizing digital transformation. We invite anyone interested in contributing to contact Claudia Lindner at claudia.lindner@kadaster.nl. Additionally, we are drafting a **publication** on integrated land management to share theoretical insights and case studies from past FIG events.

Working Group 7.7 LA Education

We have been focused on a **position paper** that transforms our analysis of **TERLA** into actionable steps, which is awaiting approval. We plan to share our findings at the **International Land Management Conference** in February (See call later in this news brief)

Additionally, several early-stage projects are underway: **Royal** is reviewing land administration curricula globally, **Grazyna** is leading a publication on curriculum design, and **Ken** is developing a land administration simulation tool.

For more details, please contact Simon Hull at simon.hull@uct.ac.za



A large, ornate conference room with a stage and audience. The room features a high ceiling with recessed lighting and decorative elements. The stage is set up with a large screen, several speakers, and a few people. The audience is seated at long tables around the room. The overall atmosphere is professional and formal.

Working Group 7.8 Comparative Cadastres

We delivered a collaborative paper on the **Governance of FIG's Semantic Resources** in Kuching, Malaysia. This showed the significance of semantic web technology for recording and enhancing the discoverability of land administration data. It also outlined ongoing efforts to align **CaLAtHe** and **LandVoc**, benefiting both FIG and the broader land administration community.

Additionally, Carmen Femenia Ribera (Spain) is spearheading research on **Comparative Land Administration in South America**, aiming to create a methodology for compiling existing studies to establish a comprehensive database. This will facilitate a general diagnosis of land administration systems in the region.

Finally, Karolin, Paulin, and Kirsikka (Finland) presented their work on the comparison and evaluation of mature cadastral systems, adding further insights to the group's research efforts.

Contact: Charl-Thom Bayer charl-thom.bayer@landportal.info



Future Events

What next?

Survey: Future of the FIG C7 Annual Meeting

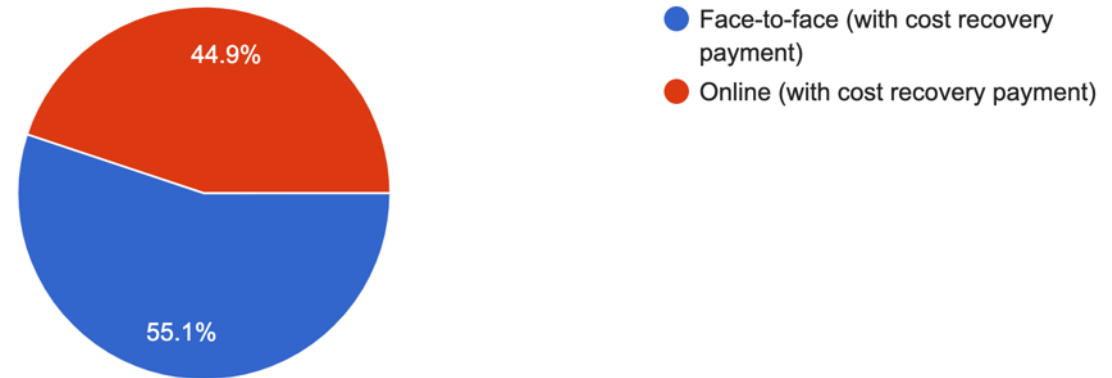
We surveyed FIG C7 delegates and friends

Thanks for the **49 responses**

Most are still in **favour** of face-to-face C7 AMs

We will work towards better **hybrid arrangements**

What format would you prefer to the FIG Commission 7 Annual Meeting in the future? (Please note: Whilst we know hybrid is popular, it is not included ...if delegates/friends still want a face-to-face event)
49 responses



2024 FIG Regional Conference Kathmandu, Nepal

All you need to know about content, registration, activities is here:
<https://www.fig.net/nepal2024/index.htm>

C7 will participate via the 'Call to Action', FIG Climate Compass, SDGs Taskforce, and **WG7.5 Women's Access to Land**. Let us know if you are getting along! There is still time to register.

It's our final event of 2024.





4th International Land Management Conference (ILM4)

The will be held online on February 27-28, 2025, organized by the Land International Network for Knowledge (LINK) in collaboration with the University of the West of England, Bristol (UWE). Researchers, practitioners, and representatives from governments, NGOs, and professional bodies are invited to submit abstracts and presentations. The conference will consider full research papers, project reviews, case studies, and other relevant presentation formats. This year's themes include:

1. How secure land rights can benefit climate action.
2. Maintaining effective land systems in zones of conflict and land disputes.
3. Increasing transparency through effective land administration and its benefits.
4. Innovations in land research and practice by early career professionals and junior researchers.

Participants are encouraged to contribute to these discussions and share insights related to these critical topics in land management.

For further information and abstract submissions please visit our website: [4th International Land Management Conference, 27-28 February 2025 – LINK \(landinternational.network\)](https://www.landinternational.network)

<https://www.fig.net/fig2025/>



FIG Working Week 2025

Brisbane, Australia | 6-10 April



**COLLABORATION, INNOVATION AND RESILIENCE:
CHAMPIONING A DIGITAL GENERATION**

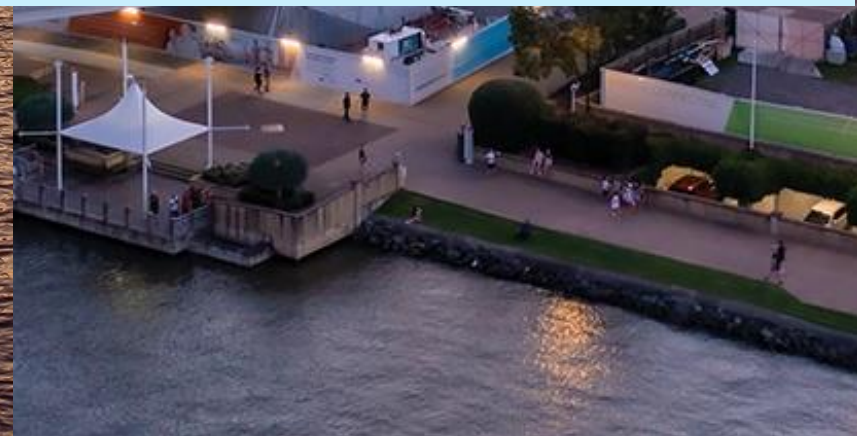
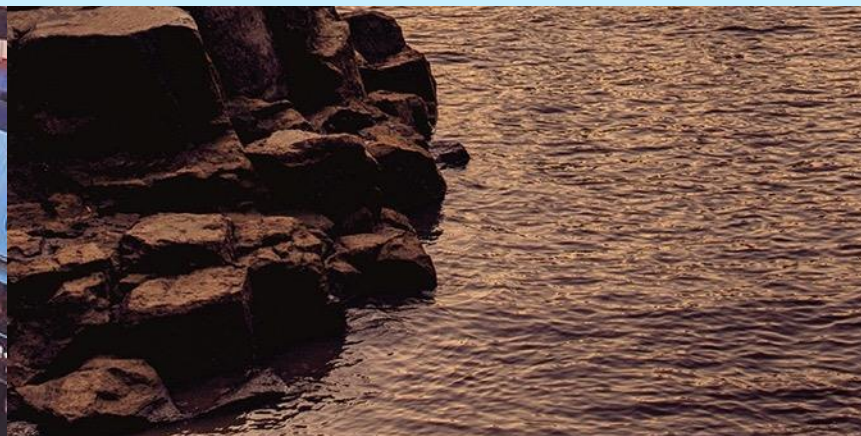
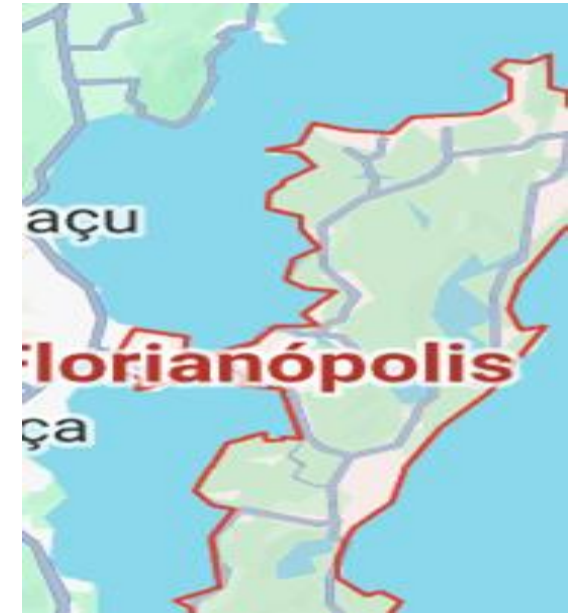


FIG C7 2025 Annual Meeting in Brazil

The 2025 FIG Commission 7 Annual Meeting is planned to take place from **November 3 to 5, 2025**, in **Florianópolis**, Santa Catarina, Brazil. Collaborators include **INCRA**, the Ministry of **Cities**, the Federal Revenue of Brazil, the **City Hall** of Florianópolis, and the Secretary of the National Treasury. Like 2024, the event will also feature the **International Workshops on LADM and 3D LA 2025**. We will also combine with **C8**. The event is open to all. Stay tuned!



Call for **FIG C7 Chair Nominations!**

At its meeting in Brisbane 6 and 10 April 2025 the FIG General Assembly will elect a **Chair Elect** to each of the **10 Commissions** for term of office **2025-2026**

You can find **further information** on the FIG web site:

https://www.fig.net/news/news_2024/10_call_nominations_chairs-elects.asp

Deadline for nominations is 20 December 2024 at 12:00 PM CET



Join our very active **WhatsApp** community

Contact: Ángel Collado Murillo
Angel.Collado@uclm.es



We're also (somewhat) active on **LinkedIn**

Link: https://www.linkedin.com/showcase/fig-commission-7-cadastre-and-land-management/?trk=public_post_follow-view-profile

Want more
regular **FIG**
C7
updates?



**That's all
from C7 for
now!**

**We'll see you
all soon...**

**Be
Landed.
Stay
Cadastred.**

