

Commission 1 – Chair Nomination

Mark Scanlon
Managing Director, Parker Scanlon
Australia



2023 - 2026

For the term 2023-2026 FIG Commission 1 will be working on:

- [International Ethics Standards](#)
- [Women in Surveying](#)
- [International Boundary Settlement and Demarcation](#)



Why Mark Scanlon for Chair?

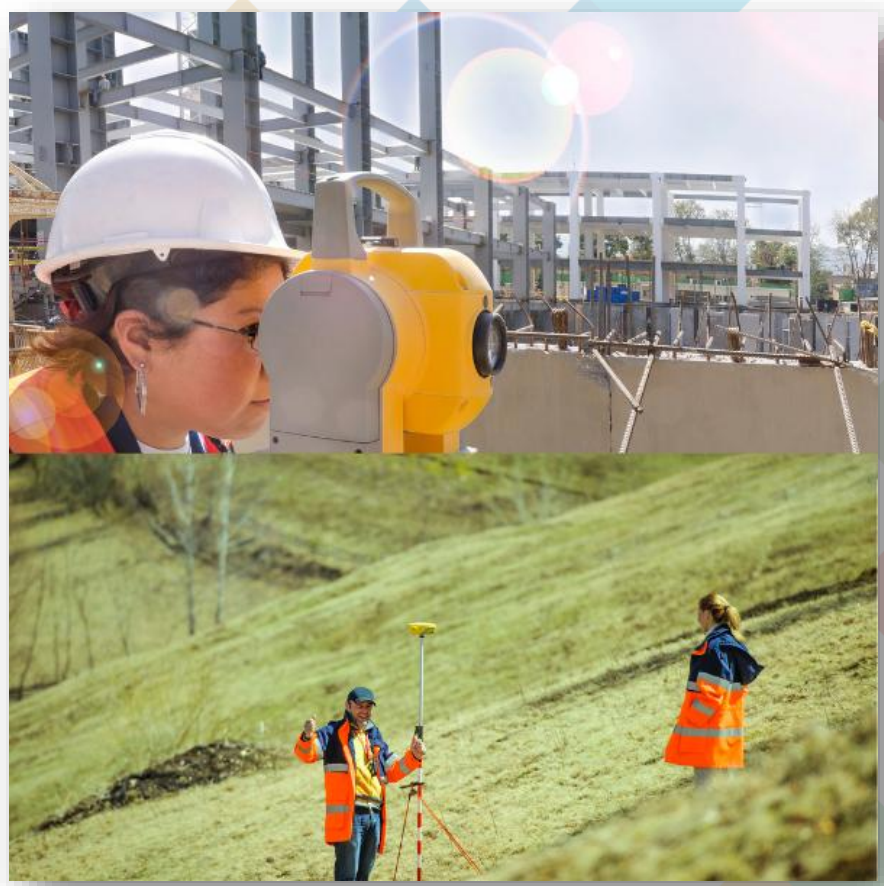
- Registered Surveyor in Australia
- More than 30 years in Private Practice - Award Winning Organisation
- Value of Business Coaching and Leadership Training
- Value of Media and Public Relations for Surveying



Future Focus for Commission 1

Greater Understanding and Community Perceptions

- Diversity in Surveying
- Advocacy for the Profession
- Community Exposure for the Profession





City
News
Canberra

MichaelWest Media
Independent Journalists

ILLAWARRA
MERCURY

The Canberra Times

HS
Herald Sun

3AW
MELBOURNE

4BC
BRISBANE

THE AUSTRALIAN

Today
Surveyors
Australia

WWW.CONSULTINGSURVEYORS.COM.AU/NEWS/MEDIA

Nothing off table to nail the CFMEU

Consulting Surveyors Australia chief executive Michelle Blicavs said she met the then-deputy premier and transport infrastructure minister early last year to raise concerns regarding surveyors being prevented by the CFMEU from working on state government jobs, accusing Ms Allan of having "brushed it off as something she couldn't help with".
"We were left on our own to solve the problem — and it remains unsolved," Ms Blicavs said.

Surveyors Australia chief executive Michelle Blicavs said she met the then-deputy premier and transport infrastructure minister early last year to raise concerns regarding surveyors being prevented by the CFMEU from working on state government jobs, accusing Ms Allan of having "brushed it off as something she couldn't help with".
"We were left on our own to solve the problem — and it remains unsolved," Ms Blicavs said.

jobs, accusing Ms Allan of having "brushed it off as something she couldn't help with".
"We were left on our own to solve the problem — and it remains unsolved," Ms Blicavs said.

The most relevant SDGs related to the presentation and theme of this session

1st relevant SDG

5 GENDER EQUALITY


2nd relevant SDG

8 DECENT WORK AND ECONOMIC GROWTH


3rd relevant SDG

16 PEACE, JUSTICE AND STRONG INSTITUTIONS


SUSTAINABLE DEVELOPMENT GOALS | International Federation of Surveyors supports the Sustainable Development Goals