

Global Mapping Project by National Mapping Organizations on the Globe

Hirofumi MARUYAMA, Hisakazu SASAKI, Takaki OKATANI

International Steering Committee for Global Mapping (ISCGM)
April 2005



Contents

- # What is Global Map, Global Mapping Project?
- # Applications
- # History
- # Present Status – participation, data development, management
- # Benefits of NMOs gained by participation
- # Issues to be solved
- # Conclusion



What is Global Map

- # Digital geographic dataset with
 - Global coverage
 - Consistent specifications (1:1 million scale)
 - Worldwide open distribution
- # Purpose
 - To be used for
 - Implementing measures for environmental protection
 - Attaining sustainable development
 - Mitigating natural disasters
- # Development under international cooperation
 - Voluntary participation by **NMOs (National Mapping Organizations)**
 - Contribution according to capacity of the organization
 - Update regularly (about every 5 years)

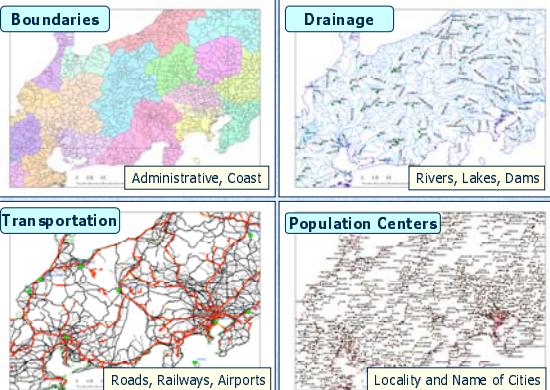


Global Map Specifications

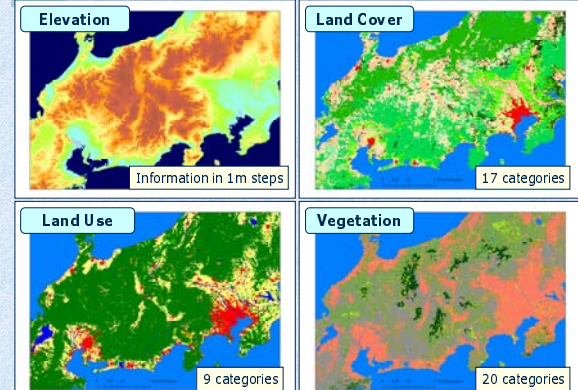
- # Spatial resolution: **1km**
(equivalent to **1:1,000,000** scale)
- # **8** layers
 - Vector data (point, line, area)
 - Boundaries** (Administrative/Coast) , **Drainage** (Rivers/Lakes) , **Transportation** (Roads/Railways/Airport) , **Population centers**
 - Raster data (grid)
 - Elevation, Land Cover, Land Use, Vegetation**

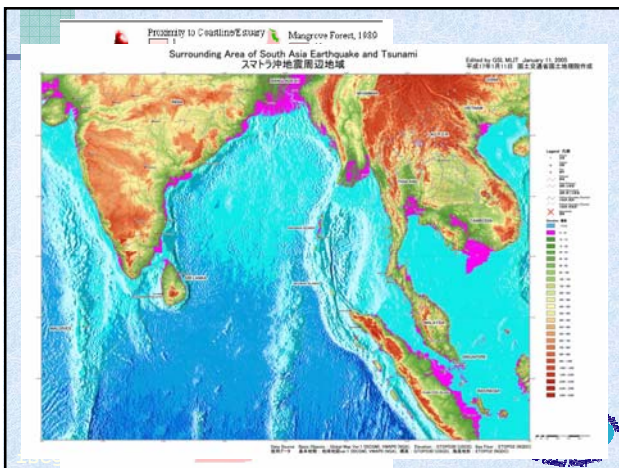
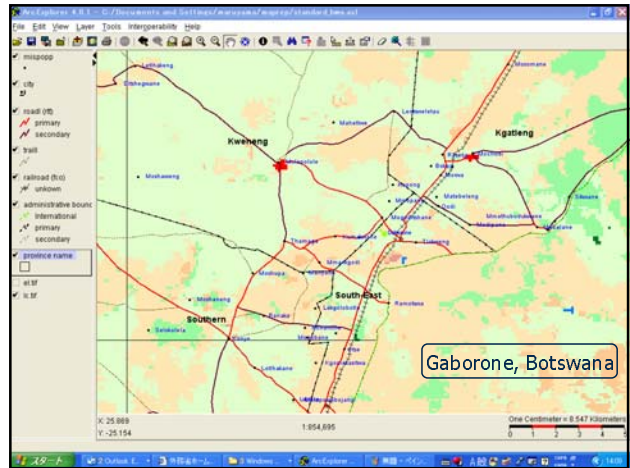
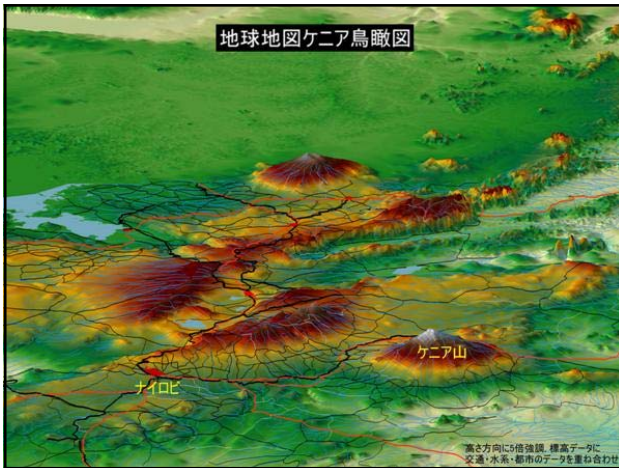
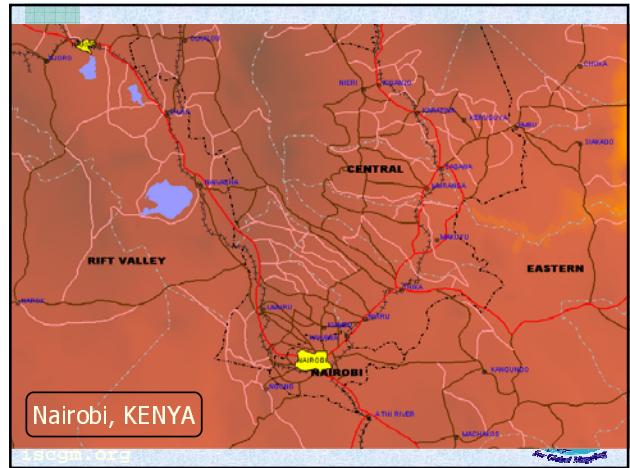
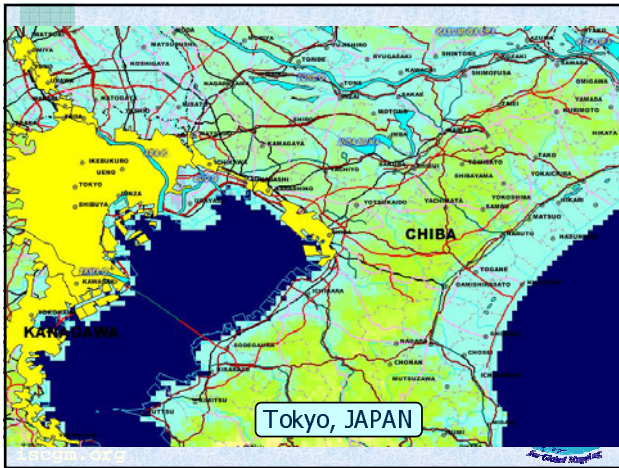


Global Map Data (Vector Data)



Global Map Data (Raster Data)





History of Global Mapping

- ≡ **1992 UNCED**
 - Adoption of "Agenda 21"
 - Global Mapping Concept proposed by Japanese Government
- ≡ **1996** Establishment of International Steering Committee
- ≡ **1997** Rio+5(UN General Assembly Special Session)
 - necessity of Global Mapping included in the adopted "Programme for the further implementation of Agenda 21"
- ≡ **2000** Release of Global Maps through the Internet
- ≡ **2002** WSSD
 - Adopted document "Plan of Implementation" describes global mapping
- ≡ **2007** Complete land surface of the Earth to be covered by Global Maps

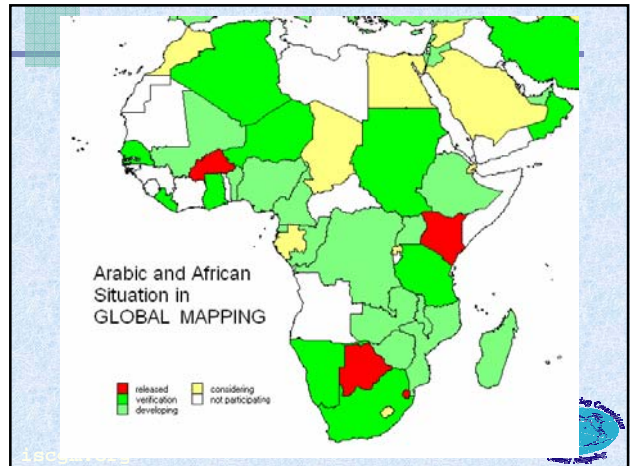
Present Status of Global Mapping

- ✚ 142 countries and regions participate (86% of the global land area coverage)
- ✚ 20 countries (13% of the global land area coverage) already released Global Maps
 - 2000 : Japan, Lao P. D. R., Nepal, Sri Lanka, Thailand,
 - 2001 : Australia, Bangladesh, Colombia, Mongolia, Philippines.
 - 2002 : Panama, Kenya
 - 2003 : Burkina Faso, Kazakhstan, Kyrgyz, Mexico, Myanmar.
 - 2004: Swaziland, Samoa
- ✚ With data for verification phase (27 countries and regions) , 58% of the global land are being covered

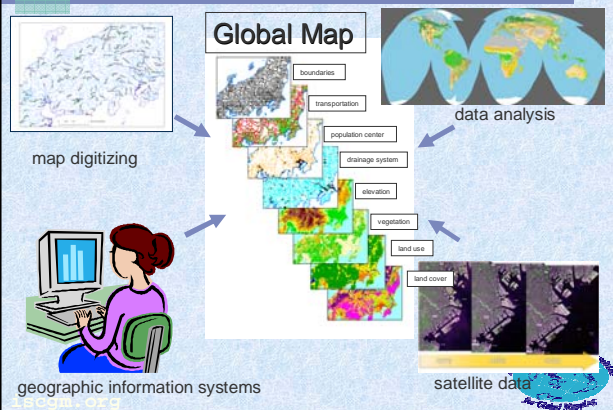


African Situation

- ✚ Participation : 27 out of 53 countries
- LANGUAGE? ↓ INSUFFICIENT COMMUNICATION?
More effort is necessary
- ✚ Data released: 4 countries
↓
Proof of effectiveness of the project scheme
- ✚ ISCGM activities:
 - 3 committee members (Kenya, Niger, South Africa)
 - Liaison : UNECACODI-GEO
 - Global Mapping seminar in Nairobi



How to Produce Global Map Version 1.0?



Management of the Project

- ✚ Who makes Global Map?
 - NMOs (National Mapping Organizations) are assumed to make Global Maps for their countries
 - Support scheme available for those who are difficult in making Global Maps by themselves
- ✚ Who manages the implementation of the project?
 - International Steering Committee for Global Mapping (ISCGM)
 - Core body to promote Global Mapping
 - 20 members incl. Heads of 17 NMOs
 - Chair : Prof. D. R. F. Taylor, Carleton Univ., Canada)
 - Secretariat: Geographical Survey Institute (GSI), Ministry of Land, Infrastructure and Transport (MLIT), Government of Japan

Management of the Project (2)

- ✦ Relation with other communities
 - Many liaison organizations to ISCGM
 - Global or regional SDIs (GSDI, PCGIAP, PCIDEA, UNECACODI, ISDE)
 - UN organizations (UN statistic division, UNEP/DEWA)
 - Academic institutions (ICA, ISPRS)
 - International organizations (ISO/TC211, PAIGH)
 - UN sustainable development
 - Global Mapping is registered as Type II partnerships / initiatives
 - Involvement in CSD activities with **consultative status**
 - GEOSS (Global Earth Observation System of Systems)
 - ISCGM is a participating organization of GEO



isgcm.org

Benefits of Participation

- ✦ Joining the world community of geo-information
- ✦ More opportunities for capacity building
- ✦ Grant programs by GIS vendors
- ✦ Driving force to NSDI establishment



isgcm.org

Capacity Building Programs

- ✦ **Global Mapping Partnership Program**
 - Coordination by MLIT, Japan
 - Further strengthen partnership especially with developing countries
 - Typical example is 5 day long GM seminar at RCMRD in Nairobi
 - Aug. 2002, Aug 2003, Nov. 2004
- ✦ **The Group Training Course on Global Mapping**
 - 2 and half months long training conducted by JICA, implemented by GSI
 - Started in 1994, and 67 people from 36 countries completed the course
- ✦ **Grant Programs by GIS vendors**
 - e.g. ESRI Global Map/GSDI grant, Intergraph grant



isgcm.org

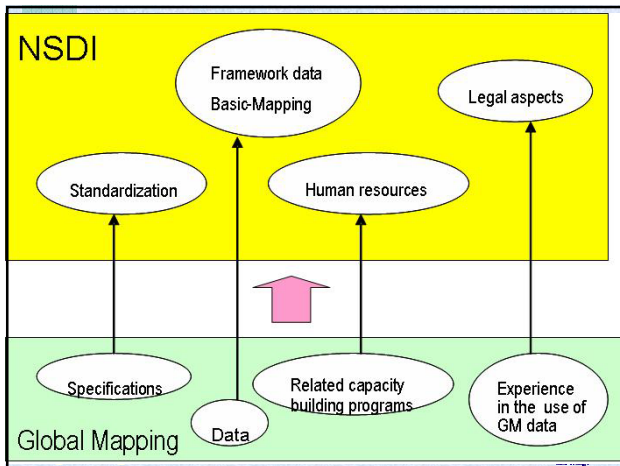


From Global Map to an NSDI

- ✦ **Basic Mapping** in 21st century should be implemented within **the concept of NSDI**
 - ✦ Experience of **Global Mapping** provides NMO with **main components of NSDI**
 - Framework data: 1:1,000,000 GM of the country concerned
 - Human resources: trained through GM development
 - Standardization: GM specifications are basically compliant with ISO/TC211
 - Legal issues: use of GM will provide such experience
- Sustainability: assured in a network of NMOs**



isgcm.org



Let's participate in Global Mapping

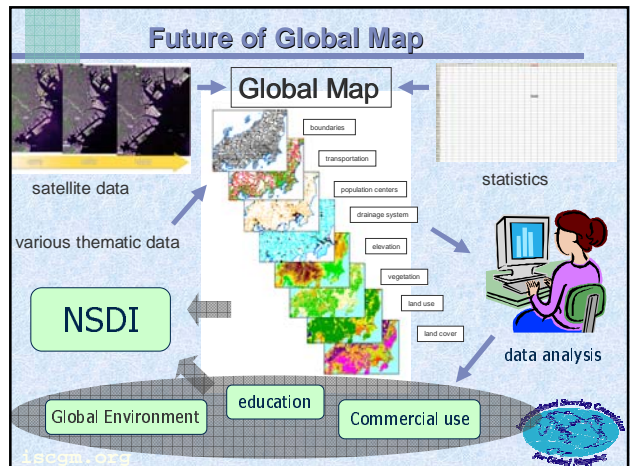
- # Support by United Nations
 - Sent recommendation letter inviting NMOs
- # Contribution depending on capacity
 - Level A: help creation of coverage for Level C countries in addition to their own national coverage
 - Level B: create their own national coverage
 - Level C: provide source materials to A countries while developing national capacity
- # Easy participation
 - No participation fee
 - Send application form with plan of data development
- # Inquiry
 - URL: <http://www.iscgm.org>, e-mail: sec@iscgm.org

iscgm.org

Issues to be solved

- # Participation more countries to the project
 - 86% -> 100%
- # Modern format fitting Internet era
- # Expansion of use of Global Map to broader areas
- # Preparation of framework data at larger scale than 1:1,000,000
- # Increase sustainability of the project
 - Regularly update must be operational

iscgm.org



Conclusion

- # Participation in Global Mapping brings various benefits to NMOs
 - e.g. necessary components to establish an NSDI
- # More participation of NMOs is necessary to complete GM development by the year 2007
- # Global Mapping project and NSDI rely on each other. Let's participate in Global Mapping project for the establishment of NSDI

iscgm.org